

AGENDA SUPPLEMENT (1)

Meeting: Eastern Area Planning Committee
Place: Wessex Room, Corn Exchange, Devizes, Wiltshire
Date: Thursday 15 September 2016
Time: 6.00 pm

The Agenda for the above meeting was published on 7 September 2016. Additional documents are now available and are attached to this Agenda Supplement.

Please direct any enquiries on this Agenda to Kieran Elliott, of Democratic Services, County Hall, Bythesea Road, Trowbridge, direct line 01225 718504 or email kieran.elliott@wiltshire.gov.uk

Press enquiries to Communications on direct lines (01225)713114/713115.

This Agenda and all the documents referred to within it are available on the Council's website at www.wiltshire.gov.uk

7 **Planning Applications (Pages 3 - 14)**

- Presentation for Committee

DATE OF PUBLICATION: 14 September 2016
--

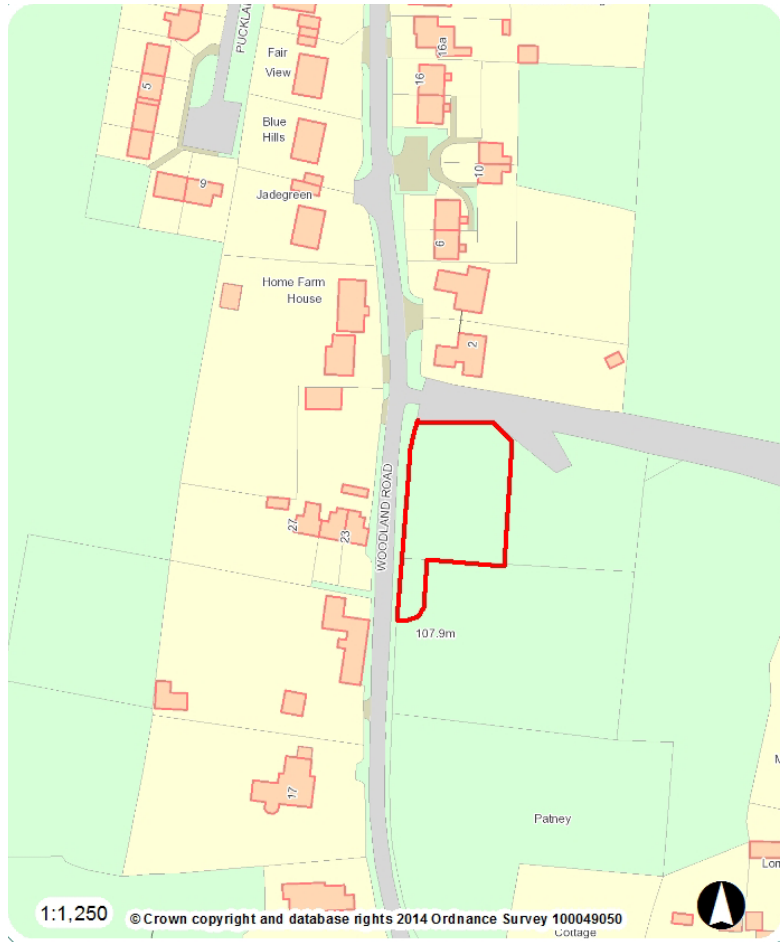
This page is intentionally left blank

Eastern Area Planning Committee

15th September 2016

7a) 16/03703/FUL Land at Woodland Road, Patney, Devizes, Wiltshire
Erection of a detached specialist dwelling for disabled person
Recommendation Refusal

Page 4

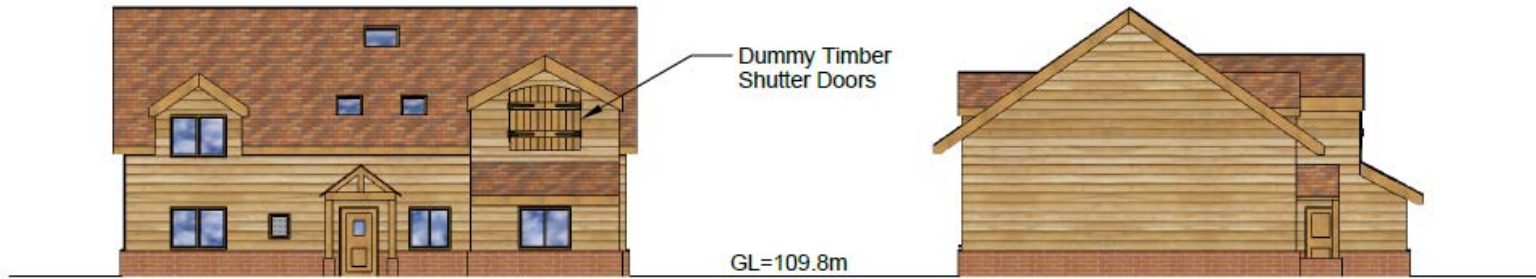


Site Location Plan



Aerial Photography





West Elevation

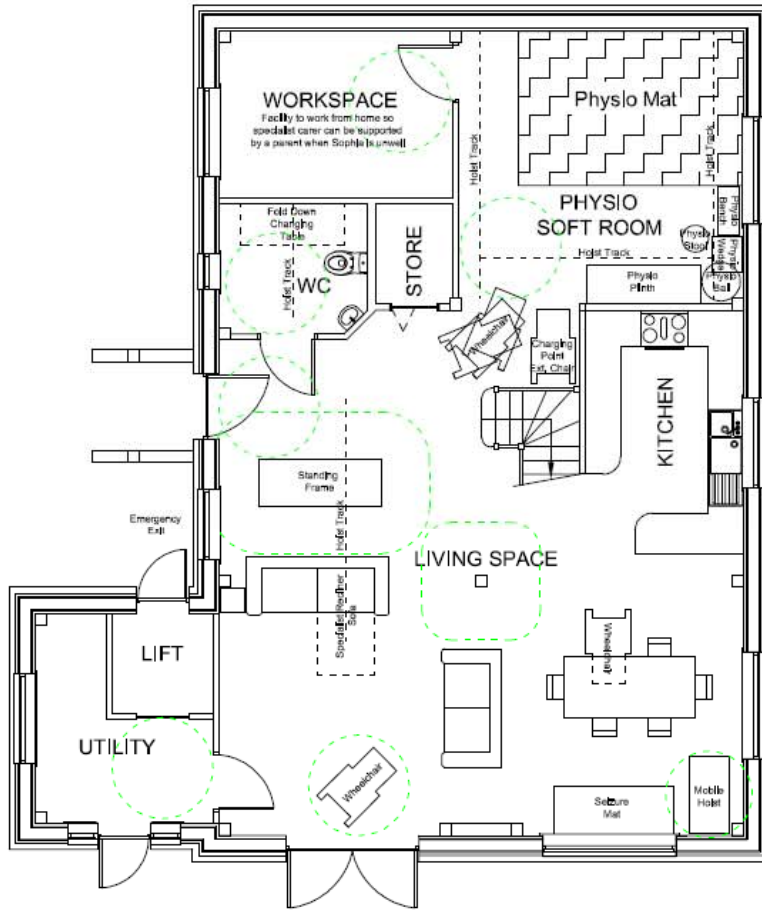
North Elevation



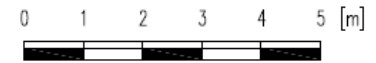
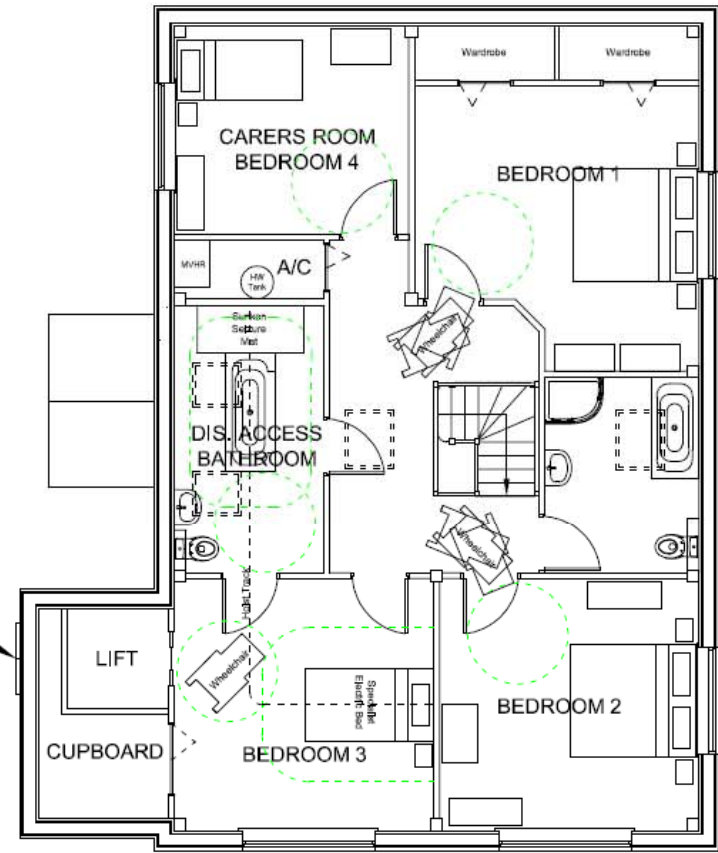
South Elevation

East Elevation





Dummy Timber Shutter Doors





VP1

Approximate OS map elevation: 110m AOD.

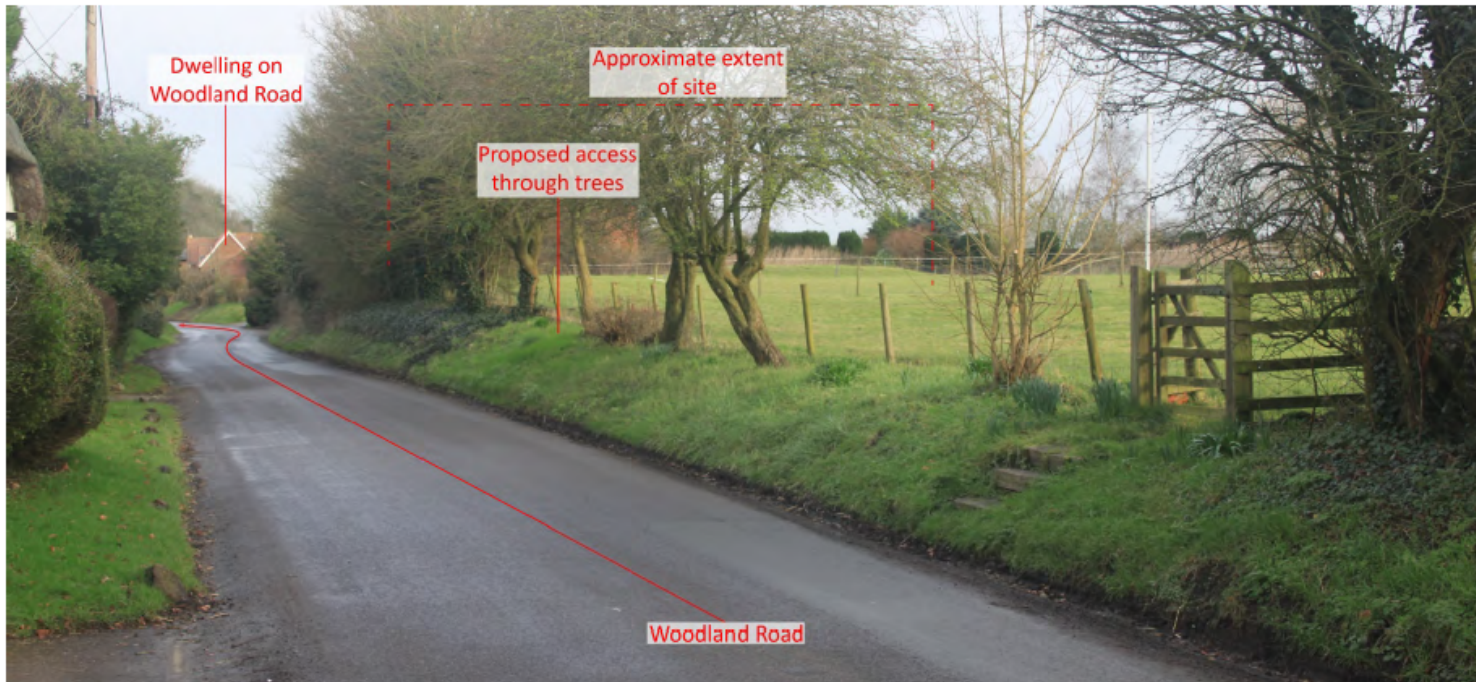
Approximate distance from site boundary: Adjacent.



VP2

Approximate OS map elevation: 112m AOD.

Approximate distance from site boundary: Adjacent.



VP6

Approximate OS map elevation: 110m AOD.

Approximate distance from site boundary: 36m.

Grade II Listed Building opposite site/entrance



View from Green to south of the site



Eastern Area Planning Committee

15th September 2016



This page is intentionally left blank